

novax

PUMPS & MOTORS



Sea water desalting | Petrochemical industry | Waste water
Industrial application | Domestic water supply | Groundwater
Pressure boost | HVAC | Heating | Fire fighting



CORA LINE series vertical in line pump offer vertical and CL ose coupled design for space saving to meet the needs of users in a variety of cold and hot water circulation, civil and general industrial.They are driven by IEC standard motor and less space-required for installation.

Design & Material

• CL osed Coupled with IEC B5 • Extended and Stub Shaft	
Design	Performance referring to BS EN733/DIN24255 standard
Structure	Vertical, Single-Stage, Single-Suction, Volute, Casing, In-line
DN (mm)	40-200
Flange	DIN250I standard, ANSI B16.5 CL ass 150lb optional
Casing	Cast Iron standard, Ductile Iron optional
Impeller	Bronze standard, Cast Iron, Stainless Steel optional
Shaft	ASTM420 standard, ASTM304, ASTM316, ASTM1045 optional
Shaft Seal	Mechanical Seal (Carbon-Sic/Viton)

Operating Data

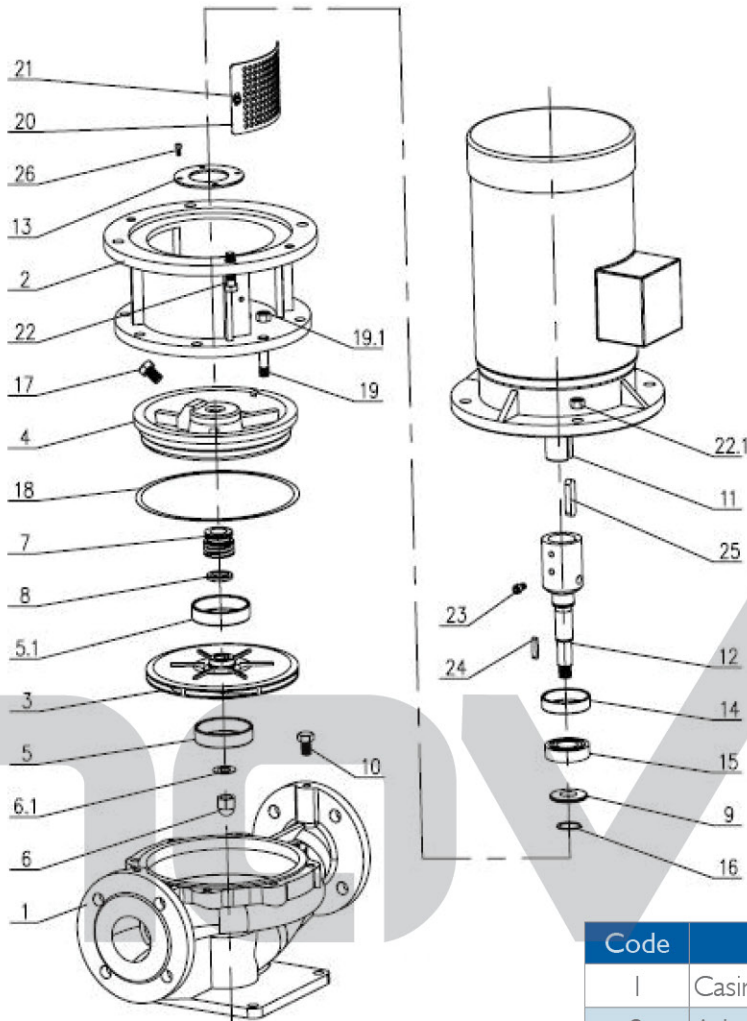
Max Flow Rate (Qmax)	600 m ³ /h
Max Head (Hmax)	155mm
Speed	1450~2900 rpm (50HZ), 1750~3500 rpm (60HZ)
Temperature	-10 Celsius to 105 Celsius
Working Pressure	1.6 MPa standard

Applications

- Heating, ventilation and air-conditioning
- Fire Protection and Fire Fighting
- Water circulation
- Liquid transfer
- Irrigation
- HVAC
- Booster systems



CORA LINE Series Explode View & List of Parts

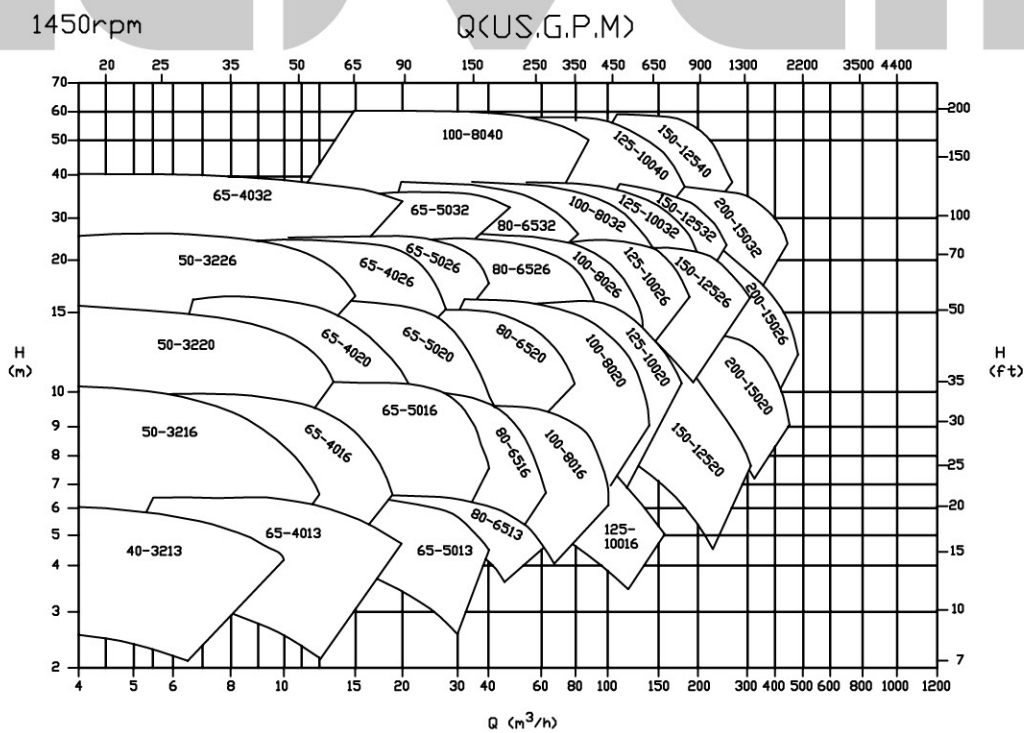
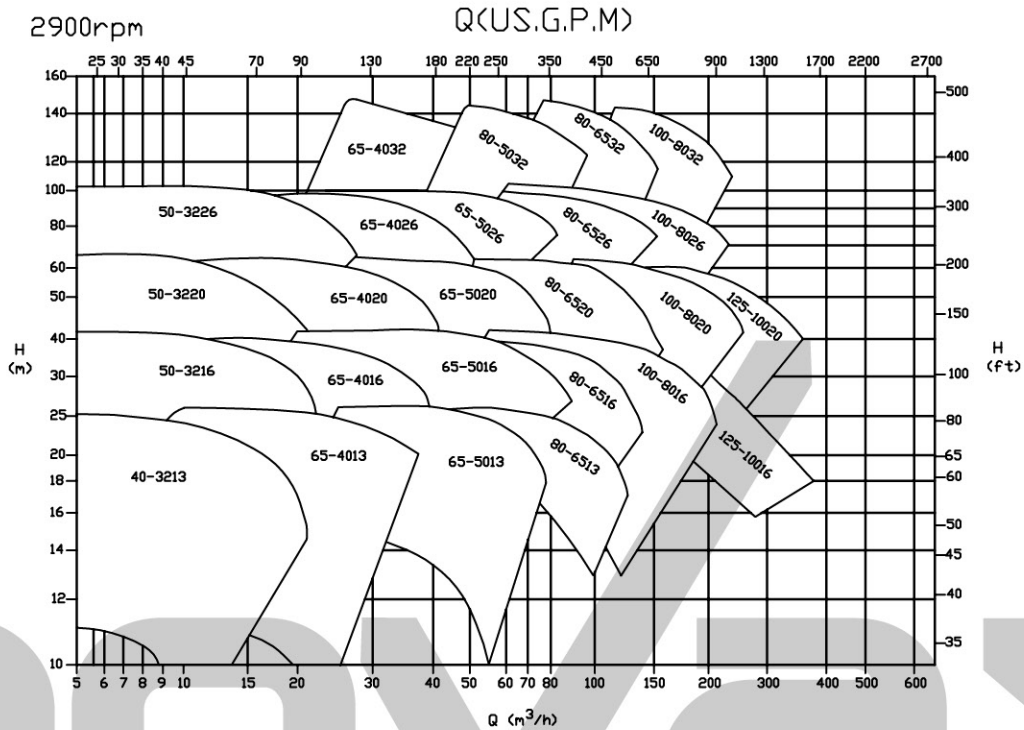


Code	Part Name
1	Casing
2	Adapter
3	Impeller
4	Casing Cover
5	Wear Ring (Front)
5.1	Wear Ring (Back)
6	Impeller Nut
6.1	Lock Washer
7	Mech. Seal
8	Seal Seat
9	Rubber Slinger
10	Plug
11	VI Motor
12	Shaft
13	Bearing Cover

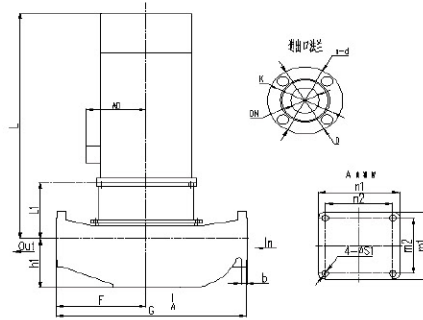
Code	Part Name
14	Rubber Check
15	Bearing
16	External CirCL ip
17	Plug
18	Casing Gasket
19	Screw Stud
19.1	Screw Nut
20	Shield
21	Screw
22	Screw Bolt
23	Screw
24	Key
25	Key
26	Screw



Family Chart CORA LINE Series (50Hz)



CORA LINE Series Installation Dimensions



Model	hI	LI	F	G	L	AD	n²xm²	nIxmI	sI	DN	D	K	n-d	b
CL 40-32/13 00554	113	152	150	310	407	145	170X200	200X320	12	40	150	110	4-ø18	16
CL 40-32/13 01102					422	155								
CL 40-32/13 01502					447	155								
CL 40-32/13 02202					407	145								
CL 65-40/13 00554	128	175	360	407	145									
CL 65-40/13 01502				422	155									
CL 65-40/13 02202				447	155									
CL 65-40/13 03002				489	180									
CL 65-40/13 04002	504	190												
CL 65-50/13 00554	155	200	410	407	145									
CL 65-50/13 00754				422	155									
CL 65-50/13 01104				447	155									
CL 65-50/13 04002				504	190									
CL 65-50/13 05502	187			577	210									
CL 65-50/13 07502	187			577	210									
CL 80-65/13 00754	160	220	460	407	145									
CL 80-65/13 01104				422	155									
CL 80-65/13 07502				577	210									
CL 80-65/13 11002				725	255									
CL 50-32/16 00554	118	160	320	407	145									
CL 50-32/16 00754				447	155									
CL 50-32/16 02202				489	180									
CL 50-32/16 03002				504	190									
CL 50-32/16 04002	577	210												
CL 50-32/16 05502	187			577	210									
CL 65-40/16 00554	138	175	370	407	145									
CL 65-40/16 00754				422	155									
CL 65-40/16 01104				489	180									
CL 65-40/16 03002				504	190									
CL 65-40/16 04002	187			577	210									
CL 65-40/16 05502	187			577	210									
CL 65-40/16 07502	187			577	210									
CL 65-50/16 00554	158	220	480	407	145									
CL 65-50/16 00754				422	155									
CL 65-50/16 01104				447	155									
CL 65-50/16 01504				489	180									
CL 65-50/16 02204	164			489	180									
CL 65-50/16 07502	187			577	210									
CL 65-50/16 11002	220			725	255									
CL 65-50/16 15002	220			725	255									
CL 80-65/16 00754	188	260	540	447	155									
CL 80-65/16 01104				489	180									
CL 80-65/16 01504				725	255									
CL 80-65/16 02204				780	280									
CL 80-65/16 07502	810	280												
CL 80-65/16 11002	839	305												
CL 80-65/16 15002	222			839	305									
CL 100-80/16 01504	220	179	330	690	504	180								
CL 100-80/16 02204					504	180								
CL 100-80/16 03004					504	180								
CL 100-80/16 15002					504	180								
CL 100-80/16 18502	504	180												
CL 100-80/16 22002	504	180												
CL 100-80/16 30002	504	180												
CL 125-100/16 03004	220	179	330	690	504	180	260X260	300X300	18	125	250	210	8-ø18	26



Model	h1	L1	F	G	L	AD	n²xm²	n1xml	s1	DN	D	K	n-d	b					
CL 125-100/16 04004	220	179	330	690	519	190	260X260	300X300	18	125	250	210	8-ø18	26					
CL 125-100/16 18502		234			794	255													
CL 125-100/16 22002		237			824	280													
CL 125-100/16 30002					897	305													
CL 50-32/20 00554						406									145				
CL 50-32/20 00754	118	151	210	420	421	155	170x200	200x230	14	50	165	125	4-ø18	20					
CL 50-32/20 01114					446														
CL 50-32/20 01504					576	210													
CL 50-32/20 05502					723	255													
CL 50-32/20 07502					406	145													
CL 50-32/20 11002		218		421	155	65	185	145	8-ø18	24									
CL 65-40/20 00754		151		446	155														
CL 65-40/20 01104		186		576	210														
CL 65-40/20 01504	138	218	240	480	723						255	170x200	200x230	14	65	185	145	4-ø18	20
CL 65-40/20 05502					154														
CL 65-40/20 07502					166		491	180											
CL 65-50/20 01504					221		726	255											
CL 65-50/20 10002							781												
CL 65-50/20 15002	150	163	260	540	488	180	200x250	250x300	18	80	200	160	8-ø18	25					
CL 80-65/20 02204															503	190			
CL 80-65/20 03004					218										723	255			
CL 80-65/20 18502															778				
CL 80-65/20 22002					221										808	280			
CL 80-65/20 30002	188	179	290	600	881	305	170x200	200x230	14	100	220	180	8-ø18	24					
CL 100-80/20 03004															504	180			
CL 100-80/20 04004					202										519	190			
CL 100-80/20 05504					234										592	210			
CL 100-80/20 07504					237										632	210			
CL 100-80/20 22002				824	280														
CL 100-80/20 30002	220	179	330	680	897	305	200x250	250x300	18	125	250	210	8-ø18	26					
CL 100-80/20 37002					237										897	305			
CL 100-80/20 45002					237										942	335			
CL 125-100/20 04004					202										519	190			
CL 125-100/20 05504					234										592	210			
CL 125-100/20 07504	260	271	360	740	632	210	200x250	250x300	18	150	285	240	8-ø22	28					
CL 125-100/20 11004					234										739	255			
CL 125-100/20 30002					237										897	305			
CL 125-100/20 37002					237										897	305			
CL 125-100/20 45002					271										942	335			
CL 150-125/20 07504	280	202	400	840	1041	370	340x340	420x420	18	200	340	295	12-ø22	28					
CL 150-125/20 11004					234										1116	410			
CL 150-125/20 55002					271										1116	410			
CL 150-125/20 75002															1166				
CL 150-125/20 90002															766	255			
CL 200-150/20 11004	118	261	400	840	821	280	170x200	200x230	14	50	165	125	4-ø18	20					
CL 200-150/20 15004					173	230									470	498	180		
CL 200-150/20 18504					228												733	255	
CL 50-32/26 02204																	788		
CL 50-32/26 03004					173												498	180	
CL 50-32/26 11002	138	228	260	520	733		255	170x200	200x230	14	65	185	145	4-ø18		20			
CL 50-32/26 15002							788												
CL 50-32/26 18502					174		818								280				
CL 65-40/26 02204							497								180				
CL 65-40/26 03004							512								190				
CL 65-40/26 11002		197		587	210														
CL 65-40/26 15002																			
CL 65-40/26 18502																			
CL 65-40/26 22002																			
CL 65-50/26 02204																			
CL 65-50/26 03004																			
CL 65-50/26 04004																			
CL 65-50/26 05504																			

Model	h1	L1	F	G	L	AD	n ² xm ²	n1xml	s1	DN	D	K	n-d	b	
CL 65-50/26 18502	138	229	260	520	788	255	170x200	200x230	14	65	185	145	4-ø18	20	
CL 65-50/26 22002					819	280									
CL 65-50/26 30002					232	305									
CL 65-50/26 37002					179	190									
CL 80-65/26 04004	168	202	290	590	519	210	170x200	200x230	14	80	200	160	8-ø18	22	
CL 80-65/26 05504					592	210									
CL 80-65/26 07504					632	305									
CL 80-65/26 30002					237	897									305
CL 80-65/26 37002	188	271	310	630	942	335	170x200	200x230	14	100	220	180	8-ø18	24	
CL 80-65/26 45002					1041	370									
CL 80-65/26 55002					202	592									210
CL 100-80/26 05504					234	632									210
CL 100-80/26 07504	220	271	340	700	739	255	200x250	250x300	18	125	250	210	8-ø18	26	
CL 100-80/26 11004					897	305									
CL 100-80/26 37002					942	335									
CL 100-80/26 45002					1041	370									
CL 100-80/26 55002	260	238	360	760	1116	410	250x300	300x350	200	340	295	12-ø22	30		
CL 100-80/26 75002					743	255									
CL 125-100/26 11004					798	280									
CL 125-100/26 15004					828	280									
CL 125-100/26 18504	280	275	380	830	1120	410	170x200	200x230	14	65	185	145	4-ø18	20	
CL 125-100/26 75002					1170	410									
CL 125-100/26 90002					798	255									
CL 150-125/26 15004					822	280									
CL 150-125/26 18504	138	241	380	830	862	280	200x250	250x300	18	150	285	240	8-ø22	26	
CL 150-125/26 22004					892	305									
CL 150-125/26 30004					838	280									
CL 200-150/26 18504					878	280									
CL 200-150/26 22004	138	179	380	830	908	305	250x300	300x350	200	340	295	12-ø22	30		
CL 200-150/26 30004					504	180									
CL 65-40/32 03004					519	190									
CL 65-40/32 04004					591	210									
CL 65-40/32 05504	138	201	290	580	631	210	170x200	200x230	14	65	185	145	4-ø18	20	
CL 65-40/32 07504					861	280									
CL 65-40/32 22002					897	305									
CL 65-40/32 30002					942	335									
CL 65-40/32 37002	155	201	380	830	591	210	200x250	250x300	18	100	220	180	8-ø18	24	
CL 65-40/32 45002					631	210									
CL 65-50/32 05504					736	255									
CL 65-50/32 07504					231	897									305
CL 65-50/32 11004	175	237	310	640	897	305	200x250	250x300	18	80	200	160	8-ø18	22	
CL 65-50/32 37002					942	335									
CL 65-50/32 45002					1043	370									
CL 65-50/32 55002					1118	410									
CL 65-50/32 75002	186	273	340	700	1167	410	200x250	250x300	18	100	220	180	8-ø18	24	
CL 80-65/32 07504					740	255									
CL 80-65/32 11004					795	280									
CL 80-65/32 15004					825	280									
CL 80-65/32 45002	240	235	360	740	1117	370	200x250	250x300	18	125	250	210	8-ø18	26	
CL 80-65/32 55002					1042	370									
CL 80-65/32 75002					1117	410									
CL 80-65/32 90002					1167	410									
CL 100-80/32N 11004	260	237	400	895	740	255	340x340	420x420	18	150	285	240	8-ø22	30	
CL 100-80/32N 15004					795	280									
CL 100-80/32N 18504					825	280									
CL 100-80/32N 75002					1117	410									
CL 100-80/32N 90002	300	285	430	920	1167	410	340x340	420x420	18	200	340	295	12-ø22	30	
CL 125-100/32 15004					795	255									
CL 125-100/32 18504					825	280									
CL 125-100/32 22004					865	280									
CL 125-100/32 30004	138	237	380	830	897	305	200x250	250x300	18	100	220	180	8-ø18	24	
CL 150-125/32 15002					809	255									
CL 150-125/32 18504					839	280									
CL 150-125/32 22004					879	280									
CL 150-125/32 30004	260	249	400	895	909	305	340x340	420x420	18	150	285	240	8-ø22	30	
CL 150-125/32 37004					964	335									
CL 200-150/32 30004					910	305									
CL 200-150/32 37004					965	335									
CL 200-150/32 45004	300	285	430	920	990	335	340x340	420x420	18	200	340	295	12-ø22	30	
CL 200-150/32 55004					1055	370									

novax

novax
PUMPS & MOTORS

NOVAX PUMPE SRL

Via Giovanni Zaniol,
188, Pieve di Soligo, Italy.

Tel: (+39) 043 881 143

Email: tony@novaxeurope.com

www.novaxeurope.com